



DESIGN AND ARCHITECTURE
/ WWW.DESIGNANDARCHITECTURE.COM /
/ ISSUE 122. 2022 • S\$8 /

**SINGAPORE
PAVILION,
EXPO 2020 DUBAI**
WOHA

**MALAYSIA PAVILION,
EXPO 2020 DUBAI**
HIJJAS ARCHITECTS + PLANNERS

AL DANA AMPHITHEATRE
S/L ARCHITECTS

SALONE DEL MOBILE 2021



SINGAPORE \$8 MALAYSIA RM18 HONGKONG HKD90 AUSTRALIA AUS\$14.95 OTHERS US\$12

SALONE DEL MOBILE 2021

HERE ARE SIX TRENDS FROM THE WORLD'S MOST IMPORTANT FURNITURE FAIR THAT YOU SHOULD TAKE NOTE OF.

WORDS
MICHELE KOH
MOROLLO

PHOTOGRAPHY
ACERBIS,
ARFLEX,
BAXTER, B&B
ITALIA, CASSINA,
CLASSICON,
COSENTINO,
DURAVIT,
FOSCARINI,
GIORGETTI, GLAS
ITALIA, HERMES,
LEMA, LIVING
DIVANI, OPINION
CIATTI

SuperSalone, this year's scaled-down version of the Milan Furniture Fair, was curated by acclaimed Italian architect Stefano Boeri.

It took place from 5 to 10 September and showcased a tightly-edited collection of new launches, including creations by iconic designers such as Piero Lissoni, Rodolfo Dordoni and Patricia Urquola.

Here are six trends from the fair that will influence architecture and interior design in the year ahead.



1.



2.



3.



4.



5.



TREND 1

CLEAR CIRCULARITY

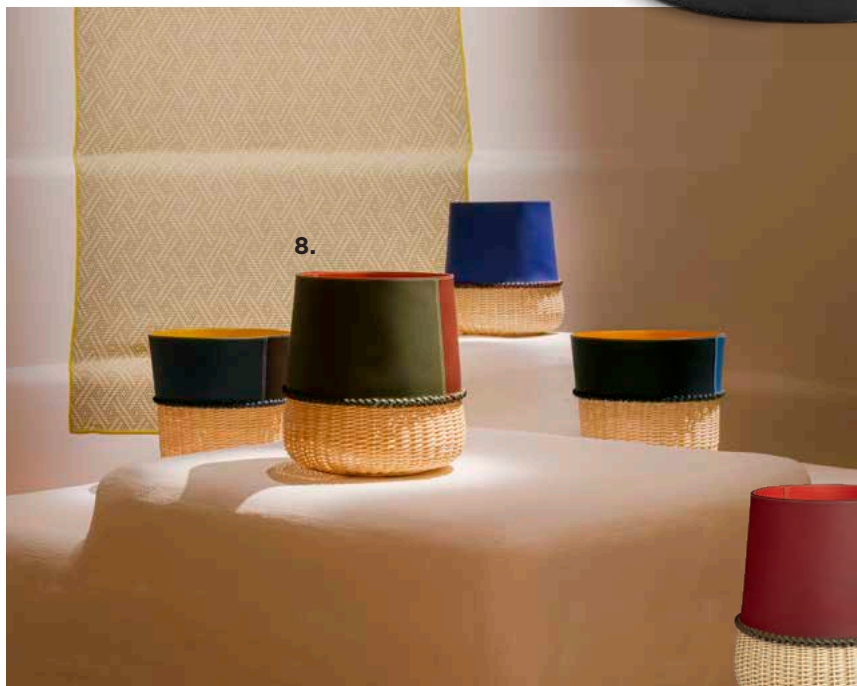
Perfectly symmetrical, balanced, pure, yet dramatic, the circle is a shape that works well with many different interior concepts and floorplans. At Supersalone, the circle made its appearance not just in dining, coffee and side tables but also in outdoor furniture, dresser cabinets, lamps, washbasins, faucets and home accessories.



6.



7.



8.

1. Twiggy Wood pendant lamp from Foscarini by Marc Sadler, available at Space Furniture

2. Creso tables from Acerbis by Vignelli Associates, available at Space Furniture

3. Houdini cabinet from Giorgetti by Roberto Lazerroni, available at Space Furniture

4. White Tulip faucet wash basin and bathtub from Duravit by Philippe Starck

5. Remastered Florian folding side table from Acerbis by Vico Magistretti, available at Space Furniture

6. "O" table in Dekton Nilium from Cosentino with Mariana and Gustavo Martini-Cosentino

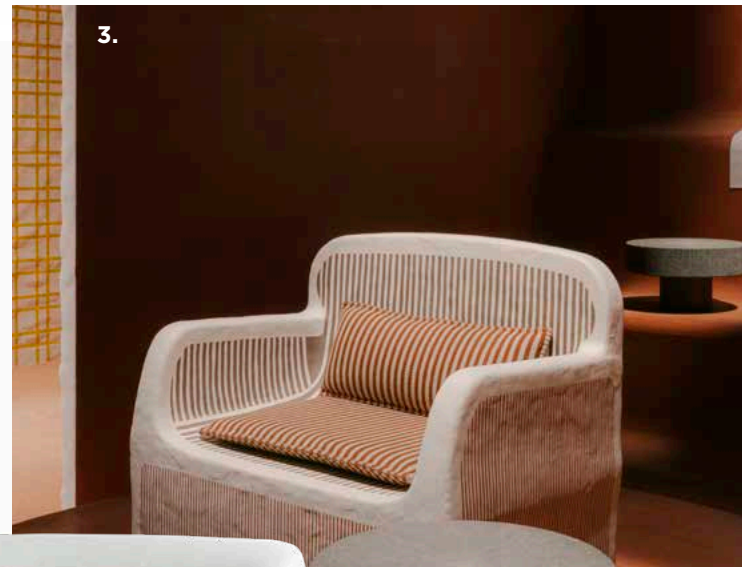
7. Moon nightstand from Living Divani by Mist-o, available at Space Furniture

8. Chromatic baskets by Hermès Studio from Hermès

TREND 2

CURVILINEARITY

Structured yet soft and rounded, curvilinear designs are a good way to give residential, commercial or hospitality projects an updated, mid-century-modern look. Spotted at Supersalone were a selection of contemporary curvilinear sofas, armchairs, ottomans, tables and lamps that beautifully harmonised streamlined forms with smooth, flowy, organic outlines.





5.

1. Allure O' table and Flair 'O' chair from B&B Italia by Monica Armani, available at Space Furniture

2. Lumiere table lamp from Foscarini by Rodolfo Dordoni, available at Space Furniture

3. Sillage d'Hermès armchair from Hermès by Studio Mumbai

4. Lunam sofa and armchair from Kartell by Patricia Urquiola, available at Space Furniture

5. Banah sofa from Arflex by Luca Nichetto, available at Space Furniture

6. Belt armchair from Minotti by Rodolfo Dordoni

7. Exord armchair from Cassina by Jeffrey Bennett, available at W. Atelier

8. Ellipse Light Up desk from Baxter by Federico Peri, available at Space Furniture



6.



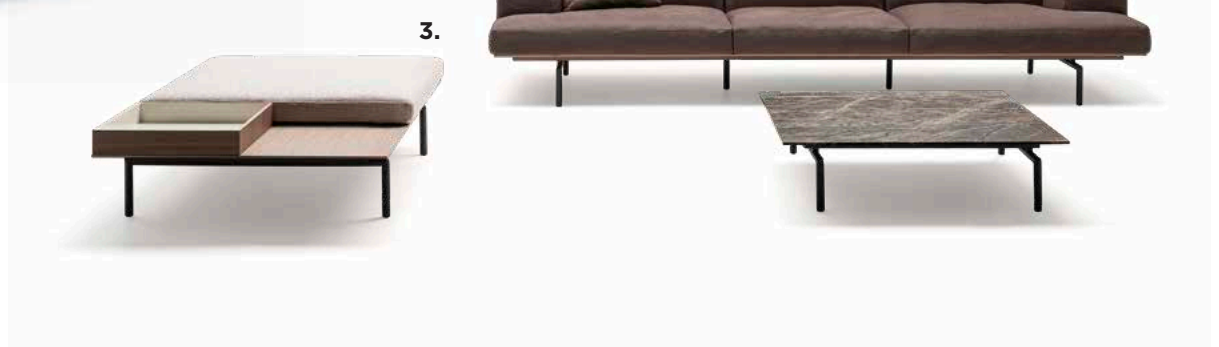
7.



8.

TREND 3 LOW PROFILE LOUNGE SETS

Many low-profile seating collections made their debut at the fair this year. Built with lower than usual heights, these sofas, chaise lounges, armchairs, ottomans and coffee and occasional tables have a distinctly contemporary aesthetic and can make a space feel larger and more spacious than its actual size. Furnishing lounge areas, hallways, receptions or galleries with such seats and tables also allow framed art, sculptures, accent lighting or décor to shine.





5.



7.



6.

1. Keel coffee tables from Minotti by Rodolfo Dordini

2. Superquadra coffee table from Minotti by Marcio Kogan / studio mk27

3. Sumo sofa from Living Divani by Piero Lissoni, available at Space Furniture

4. Soriana sofas and armchairs from Cassina by Afra and Tobia Scarpa, available at W. Atelier

5. Materia coffee table from ClassiCon by Christian Haas, available at Space Furniture

6. Tokio modular sofa system from Arflex by Claesson Koivisto Rune, available at Space Furniture

7. Marengo outdoor seating from Arflex by Mario Marengo, available at Space Furniture

8. Cruise coffee tables from Lema by Officinasdesign Lema, available at W. Atelier



8.

TREND 4 METALLIC SURFACES

From side tables to chairs, lamps and coat hangers, metal was used by many exhibitors at this year's fair. Of note are a number of sleek, minimalistic collections such as the Mammamia Chair by Opinion Ciatti, which has metal seats presented in a paper-thin format. Using metallic gold or silver surfaces is an effective way to add more luxury and glamour to projects, while colourful, shiny metallic finishes are ideal for enlivening social spaces.



1. Geen-A floor and table lamp from Kartell by Ferruccio Laviani, available at Space Furniture

2. XXX coffee tables from Opinion Ciatti by Lapo Ciatti, available at Space Furniture

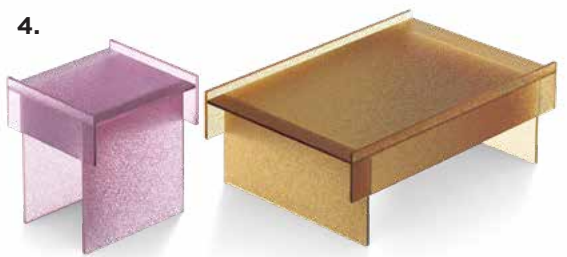
3. Arcade lighting collection from Castro Lighting

4. Pilotis coffee tables from Minotti by Rodolfo Dordoni

5. Tab.u stool, side table and coffee table from Opinion Ciatti by Brun Rainaldi, available at Space Furniture

6. Mammamia stackable chairs from Opinion Ciatti by Marcello Ziliani, available at Space Furniture

7. Senzatempo hanging coat rack from Opinion Ciatti by Lapo Ciatti, available at Space Furniture



TREND 5

GLASS AND PLASTIC

Transparency is something that much of the post-pandemic world would like from their governments and policy makers. In the world of design, this need for openness translates to more products made from transparent or translucent materials, such as clear or coloured tempered or laminated glass or plastic.

1. Radio in Cristallo from Cassina by Franco Albini, available at W. Atelier

2. Threshold mirror cabinet from Arflex by Neri&Hu, available at Space Furniture

3. Sol side tables from ClassiCon by Ortega Guijarro, available at Space Furniture

4. Shimmer tables from Glas Italia by Patricia Urquiola, available at Space Furniture

5. Thierry side tables from Kartell by Piero Lissoni, available at Space Furniture

6. Sesto table from Lema by Piero Lissoni, available at W. Atelier

7. Sherazade slide from Glas Italia by Piero Lissoni, available at Space Furniture

8. Simoon coffee tables from Glas Italia by Patricia Urquiola, available at Space Furniture

TREND 6

SHARP ANGLES

An ideal complement to spaces with exposed concrete walls, floors and ceilings, and particularly well suited for office interiors, highly structured furniture with clean lines, squarish or rectilinear forms and sharp corners can lend an air of masculinity and sobriety to any space. Here are some impressive new launches with sleek and sharp angularity.

2.



1.



3.





5.

1. Bel Air seat system from Arflex by Claesson Koivisto Rune, available at Space Furniture

2. Elsa armchair from Giorgetti by m2 Atelier, available at Space Furniture

3. Brasilia sofa and beds from Minotti by Marcio Kogan / studio mk27

4. Venise coffee table from Lema by Gabriele and Oscar Buratti, available at W. Atelier

5. Angelo Stone floor and table lamps from Kartell by Philippe Starck, available at Space Furniture

6. Kasbah outdoor seating system from Living Divani by David Lopez Quincoces, available at Space Furniture

7. Daiki Studio armchairs from Minotti by Marcio Kogan / studio mk27



6.



7.

GEOMETRICALLY DRAMATIC

**RT+Q ARCHITECTS HAS
DESIGNED A HOUSE WITH
IMPACT AND GRAVITAS,
DEFINED BY ITS TRUNCATED
ROOF AND DYNAMIC,
WRAPAROUND BALCONY.**

WORDS
MICHELE KOH
MOROLLO

/

PHOTOGRAPHY
MASANO KAWANA,
IRIEEYES

Located in Singapore's prestigious District 10, this house by award-winning Singapore firm RT+Q Architects stands on a hill above a pool and a long, dignified driveway.

"Our client wanted their house to sit on the top of the sloping site so it would have impact and gravitas," reveals Jonathan Quek who worked with his colleagues TK Quek, Rene Tan and Jes Ang on the project.

To make the footprint as efficient as possible, they opted to have a square floor plan and push the house back towards the rear property line.

This allowed for the allocation of a 25m-long pool, an outdoor entertainment area perpendicular to the house, and a long driveway that slopes up to it.

FORM AND FUNCTION

The building itself is two levels and square shaped – 25m in length on each side – with a distinctive roof and a balcony that wraps completely around the second floor.

"The roof takes the form of a gently sloping, truncated pyramid with a level plane [than a tip] for the skylight.

"The familiar, domestic form nestles

01. The house has a square floor plan and was designed with a truncated pyramid roof.





“

[The skylight] creates drama with light and shadow and frees up the section for vertical connectivity for views, sound and air flow.

”



02. Exterior slate fin feature walls provide definition to the outdoor spaces.

03. The perimeter of the balcony is fitted with custom-made, sliding aluminum lattice screens that can be adjusted as needed for an interchangeable façade design.

comfortably in the low-rise skyline of Singapore's prime residential district,” says Quek.

Because the client favoured the scale-like appearance of traditional clay-tiled roofs, RT+Q replicated this look but using a more modern, less-common clay tile pattern.

“The tiles we chose added dimensionality to the roof pattern, which complemented and enhanced the look of the façade,” he explained.

The biggest challenge was brightening a deep, square floor plan, which was solved with a unique roof design and air well.

In the middle of the roof they included a square skylight and a void below it.

The skylight draws in sunlight, while the air well distributes the light and circulates air through both levels of the house.







04. The outdoor entertainment area is connected to the pool.

HOUSE OF VERANDAHS

LOCATION
Singapore

COMPLETION
2020

SITE AREA
1,500m²

GROSS FLOOR AREA
700m²

ARCHITECT
RT+Q Architects

LEAD ARCHITECTS
Rene Tan, TK Quek,
Jonathan Quek, Jes
Ang

CONTRACTOR
Towner Construction

C&S CONSULTANT
TNJ Consultants

M&E CONSULTANT
CCA & Partners

QUANTITY SURVEYOR
1MH & Associates

**LANDSCAPE
ARCHITECT**
Mandala Landscapes

SANITARYWARE
Gessi & Duravit

KITCHEN
4plus8



05. A circular cut-out adds interest to an exterior slate fin wall.

"This creates drama with light and shadow and frees up the section for vertical connectivity for views, sound and air flow," says Quek.

Besides spilling in through the skylight and being distributed through the air well, natural light also enters through full-height windows on both floors.

DYNAMIC SCREENS

The ground floor plan includes open living spaces in the front and all other functional zones at the rear.

Along certain sections of the ground level, slate fin feature walls extend significantly past the outline of the house to provide definition to the outdoor spaces, and

FLOOR PLANS

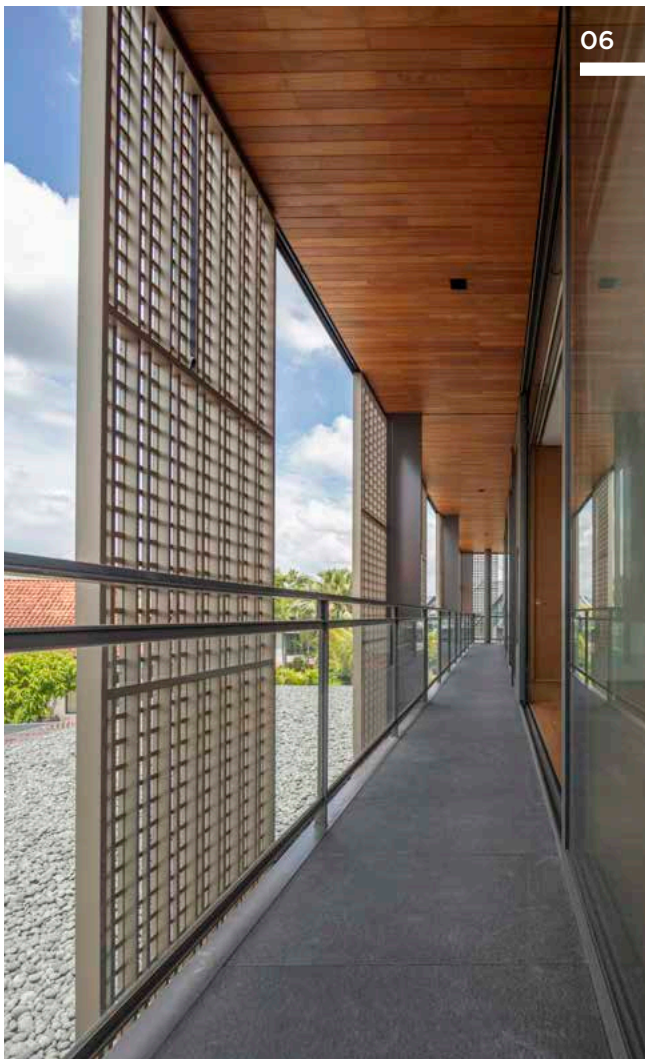


1ST FLOOR



2ND FLOOR

JONATHAN QUEK,
DIRECTOR,
RT+Q ARCHITECTS

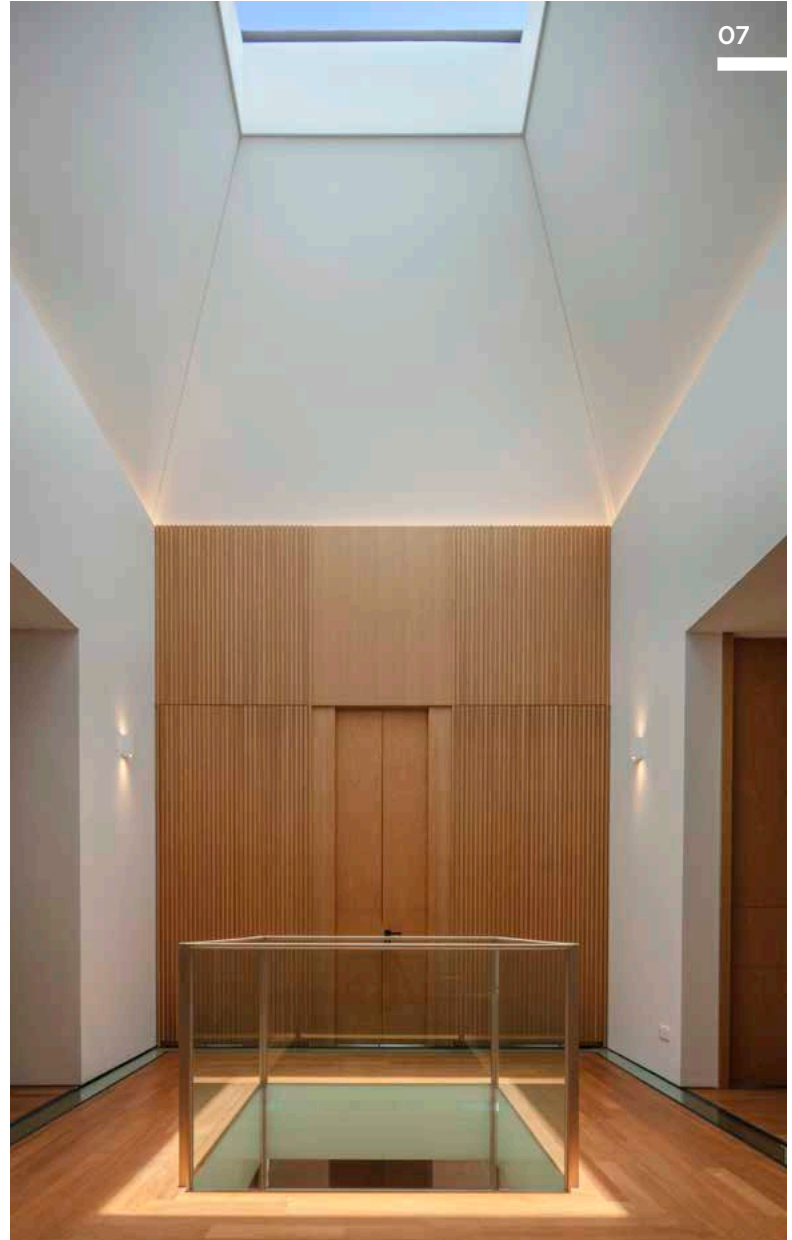


privacy for the back of house.

"These help define the spaces and add a tropical touch," says Quek.

The expansive master bedroom is located on the second floor and oriented to the front to face the pool and driveway.

The upper level also has a continuous balcony that hugs around all four sides of the house.



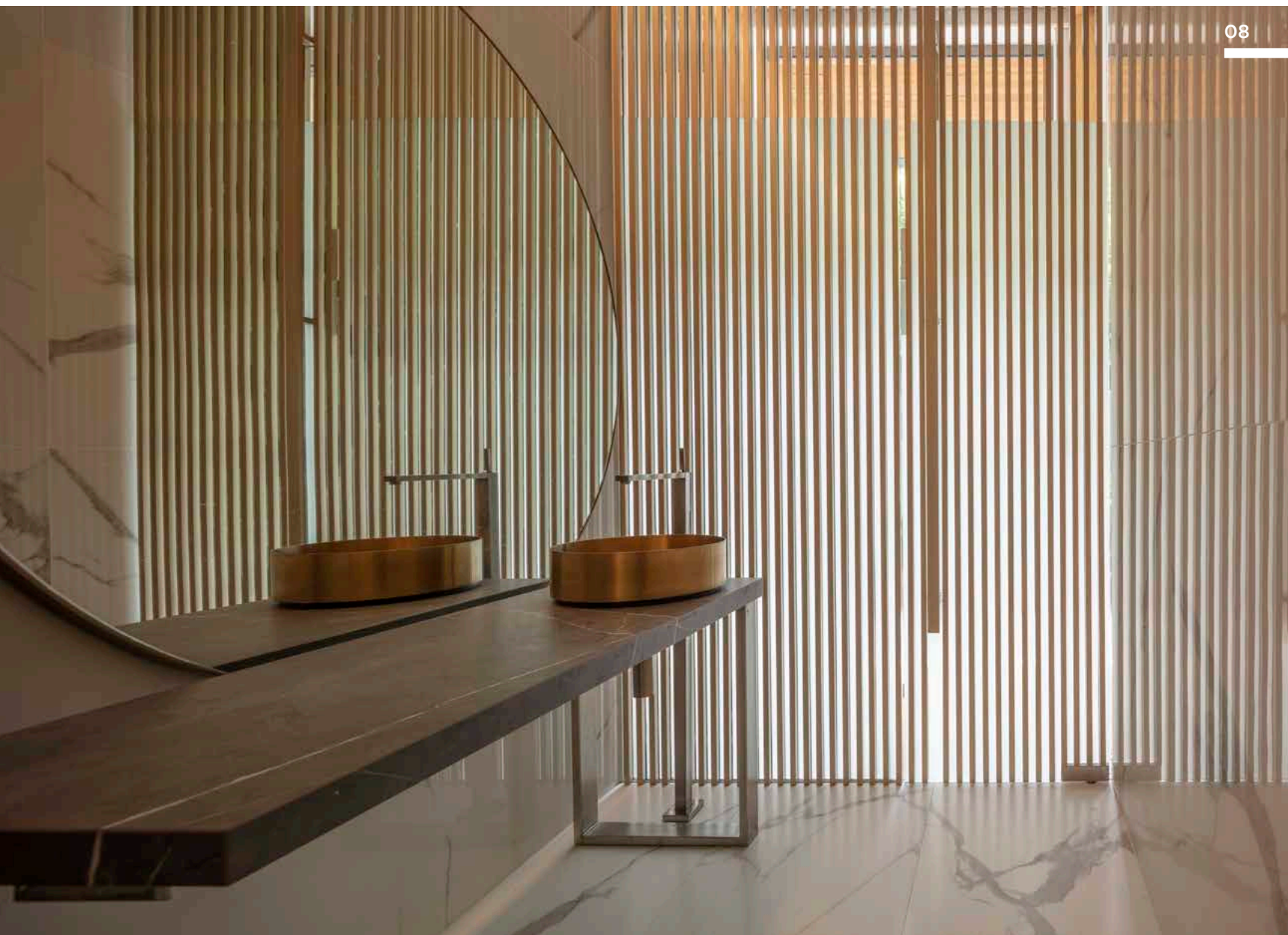
The perimeter of the balcony is fitted with custom-made, sliding aluminum lattice screens that can be adjusted as needed for a fluid façade design.

These can be easily moved to provide shade in accordance with the movement of the sun through the day, thus providing excellent passive cooling.

"The large balconies are ideal for enjoying the tropical weather and outdoor views, and the aluminum lattice screens give scale and perforation to the face of the building," says Quek.

06. A continuous balcony wraps around the entire perimeter of the house.

07. In the middle of the truncated roof, a square skylight draws in sunlight, while the air well below it distributes the light through both levels of the house.



CONSTANTLY REINVENTING

The house has a framework of concrete slabs and steel columns.

To create a free floor plan, these columns were designed to be independent of the façade and walls.

Sustainability was also achieved through large overhanging roofs for rain protection.

This geometrically dramatic project continues RT+Q's quest to hone its craft and reinvent ideas for the creation of beautiful spaces.

Like many of its other projects, the design of this house is guided by the Vitruvian principles of symmetry, proportion, composition and scale.

"RT+Q has expanded its repertoire by designing projects of different scales and permanence, such as stages, bus stops and even tombstones.

"This has freed us from the usual constraints of architecture through the experiments in form-making and materiality," says Quek.

08. The design of this house is guided by the Vitruvian principles of symmetry, proportion, composition and scale.